

SAM4S Printer Driver Installer
User Manual

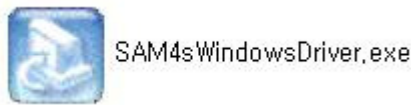


CONTENTS

1. STARTING WINDOWS DRIVER INSTALLER.....	3
2. PRINTER INSTALLATION.....	5
3. PRINTER UNINSTALLATION	18
4. INSTALL / UNINSTALL SELECTION MODE.....	20
5. ADD/REMOVE PROGRAMS	20

1. Starting Windows Driver Installer

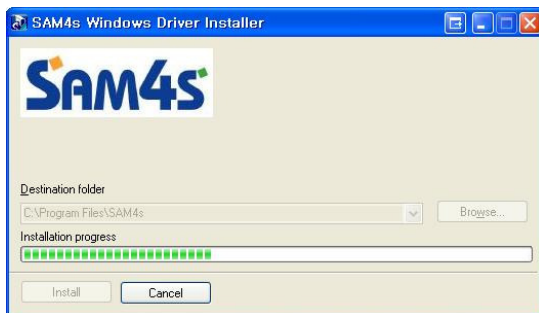
1) Double Click the 'SAM4sWindowsDriver.exe' to extract.



[Pic 1] Installation File

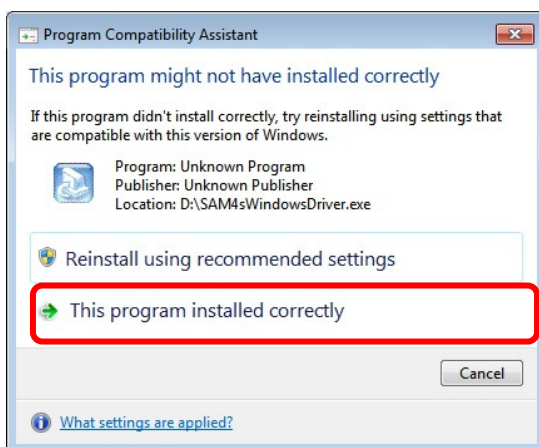
- * This manual is written based on the Windows XP Environment. Any specific requirement for the other OS will be mentioned.
- * .Net Framework 3.0 or above should have installed.
- * Supported Language: English, Korean
- * Supported OS: WePos, Windows XP, PosReady2009, Windows 7 32bit, Windows7 64bit

2) Extracting files for the Windows Driver Installer to 'Program Files\SAM4s' automatically
(64bit OS: Program Files [x86]\SAM4s)



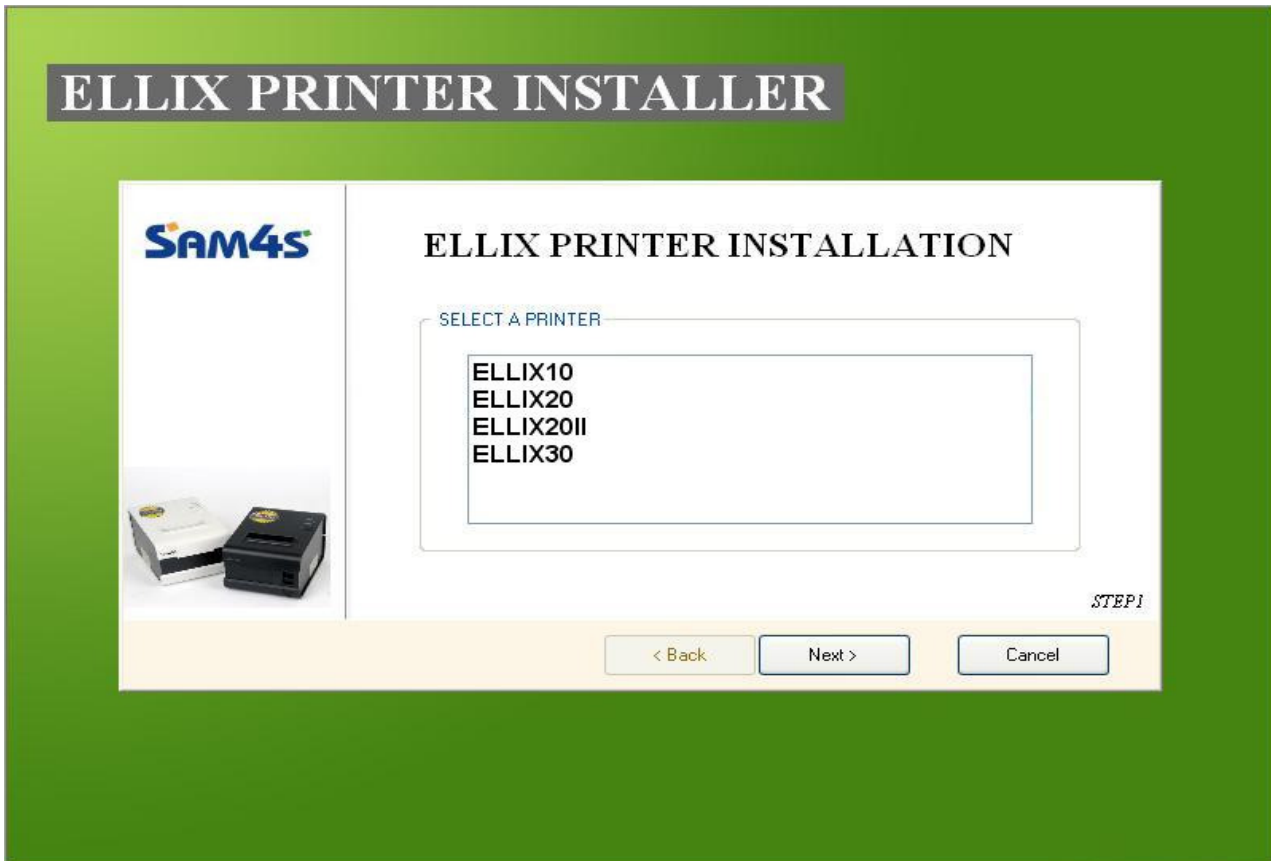
[Pic No.2] Extracting files for the Windows Driver Installer

- * Even if already installed, the installer will overwrite the files.
- * Using WinRAR 32bit executable-extracting file, Compatibility message can be displayed on 64bit environment.
- * Clicking the 'This program installed correctly' to progress. This will not affect any program or System.



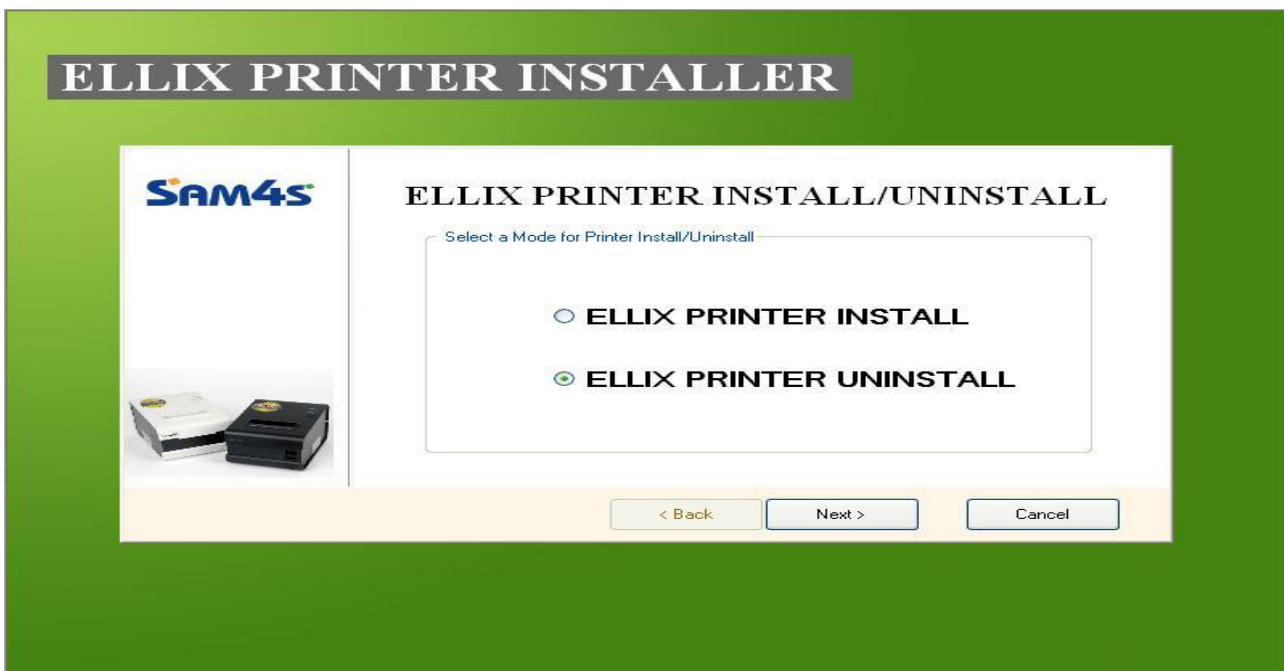
[Pic No.3] Program Compatibility Assistant

3) Starting Installation



[Pic No.4-1] Select a Printer

* If there is no printer installed, go to the printer setup screen



[Pic No.4-2] Printer Install & Uninstall

* If a printer installed, go to the Install / Uninstall selection screen.

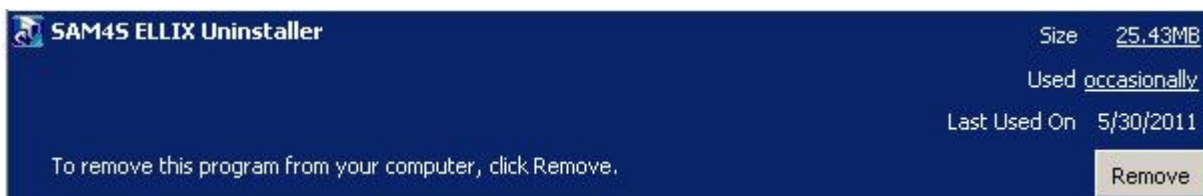
4) After extracting files, Create shortcut on the 'Program Menu'

* by this shortcut, Windows driver installer can be executed.



[Pic No.5] Program Menu

5) After installing a printer, Create Uninstaller on the 'Add or Remove Program'



[Pic No.6] Add or Remove Programs

2. Printer Installation

1) Select a Printer



[Pic No.7] Printer Installation STEP1

- * Select a printer and click 'Next >'.
- * If you do not select a printer can't go to next step.

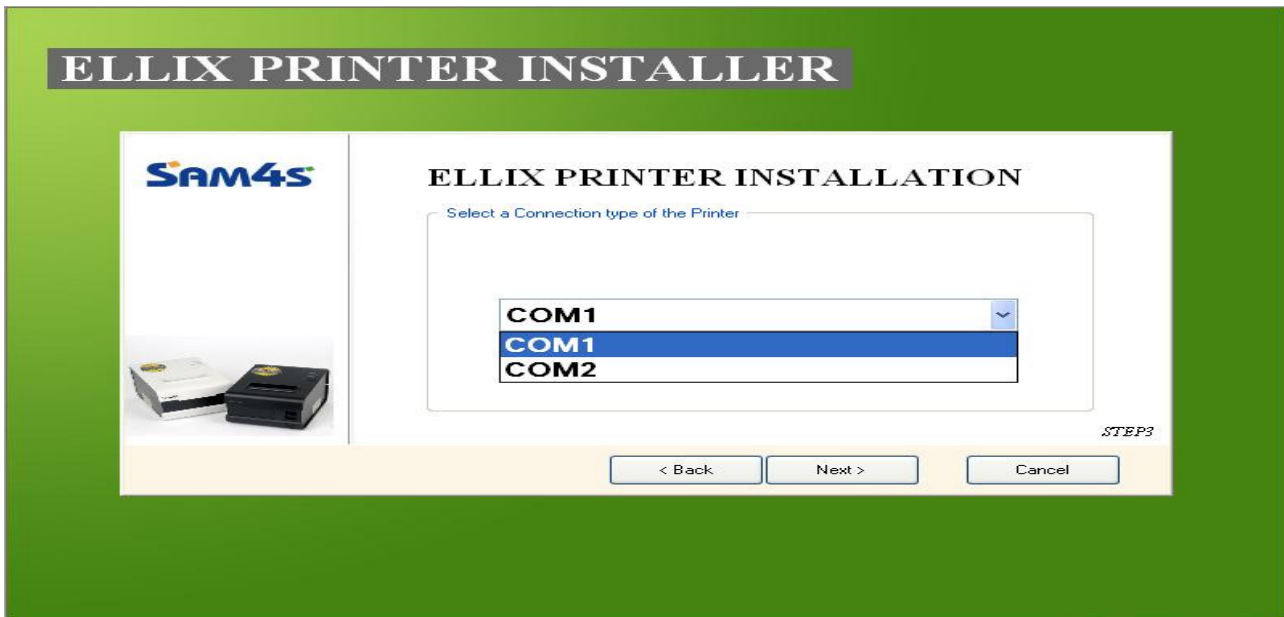
2) Select a connection type



[Pic No.8] Printer Installation STEP2

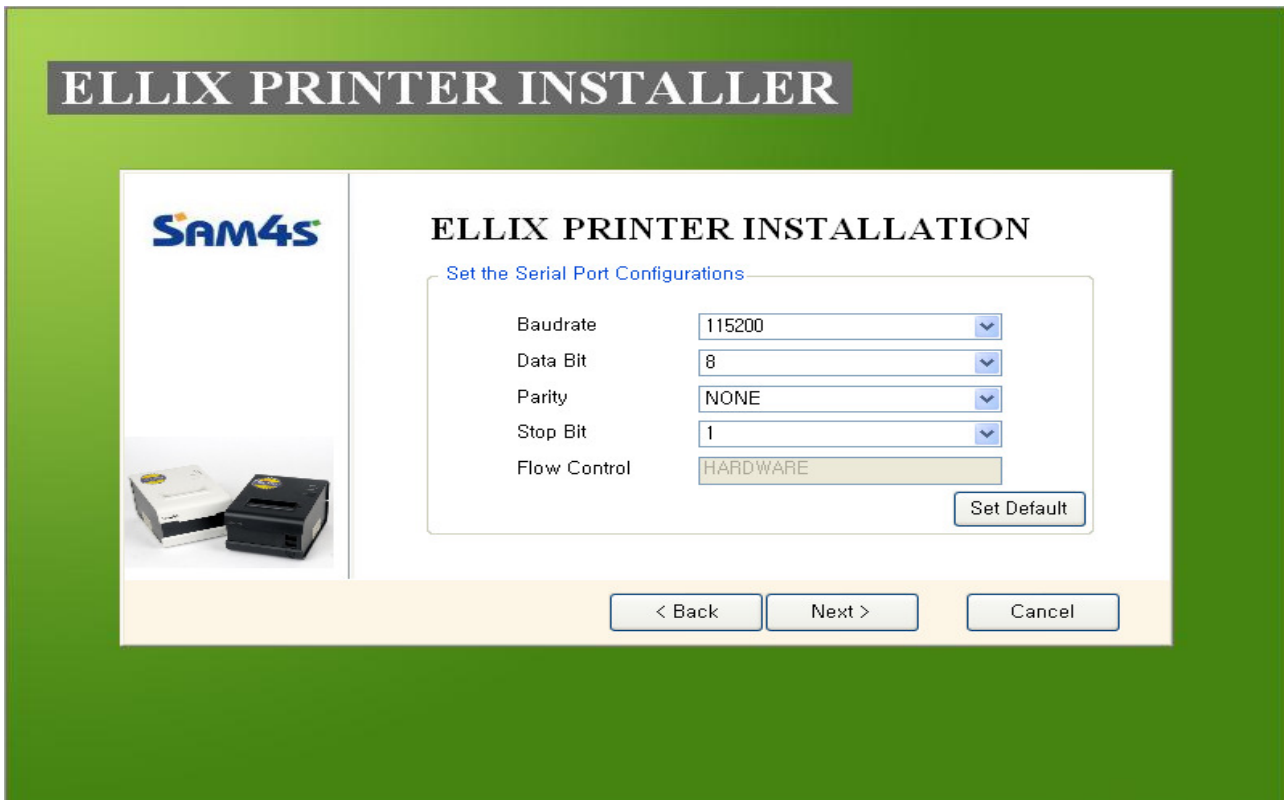
- * Select a connection type of the printer.
- * **!!Caution!!** In case of PARALLEL or USB-II connection, printer must be turned off during install.
- * USB-II is supported from the ELLIX20 or above.

3) Select a port (USB-II connection will not have this step)



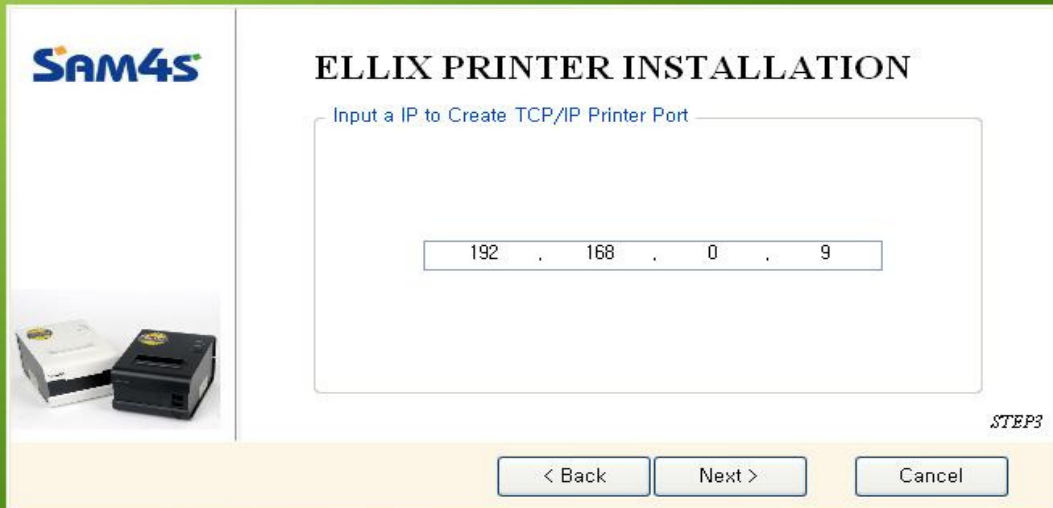
[Pic No.9-1] Printer Installation STEP3

- * SERIAL / USB-I / PARALLEL: Go to STEP3 to select a port.
- * USB-II: Start Printer Installation without select a port.
- * SERIAL will Set the Serial Port Configurations on next step.



[Pic No.9-2] Set the Serial Port Configurations

ELLIX PRINTER INSTALLER



SAM4S

ELLIX PRINTER INSTALLATION

Input a IP to Create TCP/IP Printer Port

192 . 168 . 0 . 9

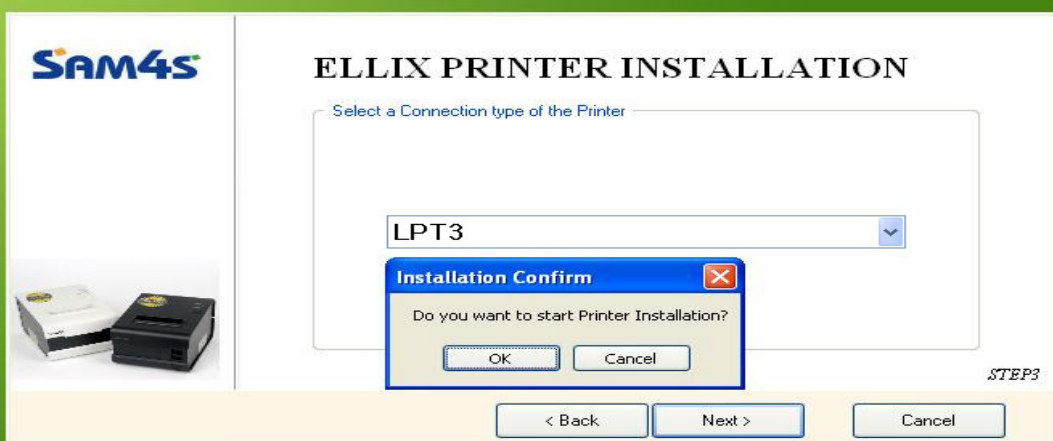
STEP3

< Back Next > Cancel

[Pic No.9-3] Create a TCP/IP Printer Port

4) Start Printer Installation

ELLIX PRINTER INSTALLER



SAM4S

ELLIX PRINTER INSTALLATION

Select a Connection type of the Printer

LPT3

Installation Confirm

Do you want to start Printer Installation?

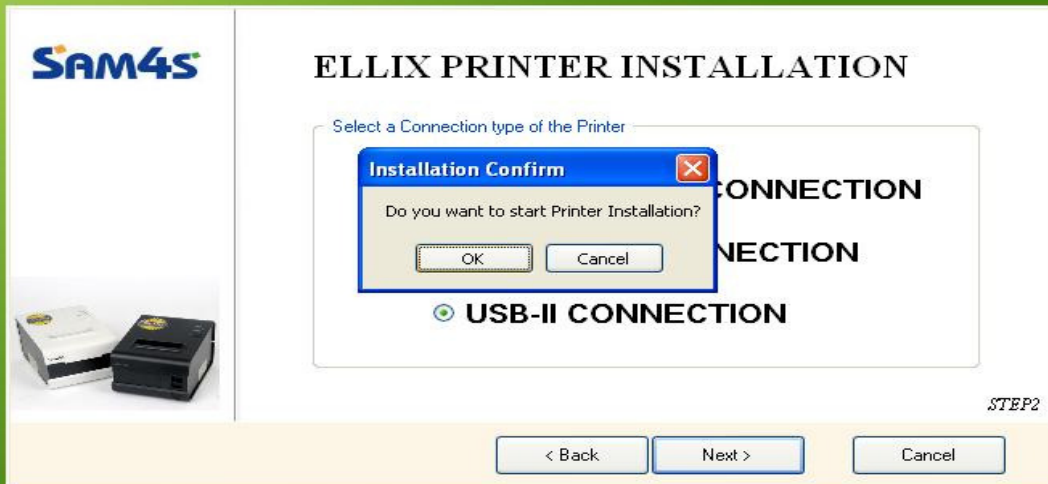
OK Cancel

STEP3

< Back Next > Cancel

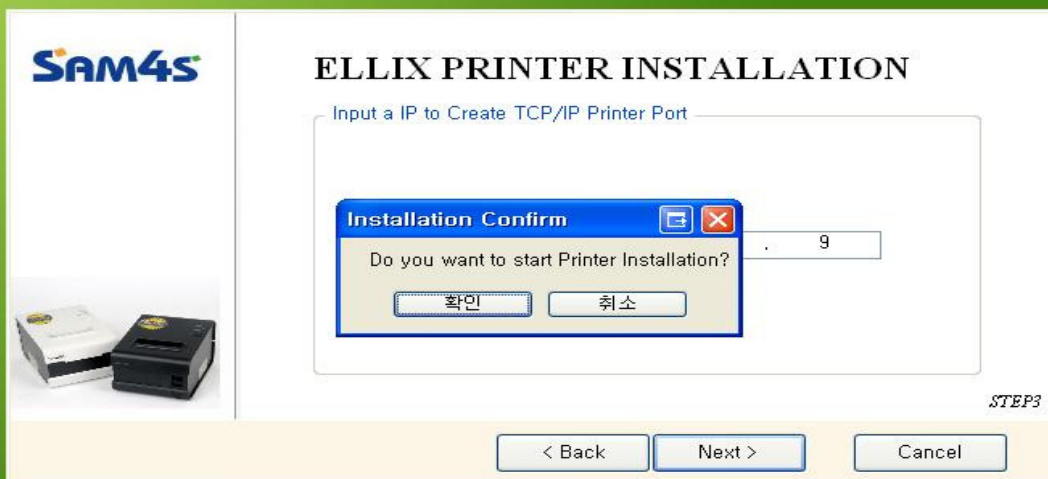
[Pic No.10-1] Start Printer Installation for SERIAL / USB-I / PARALLEL connection

ELLIX PRINTER INSTALLER



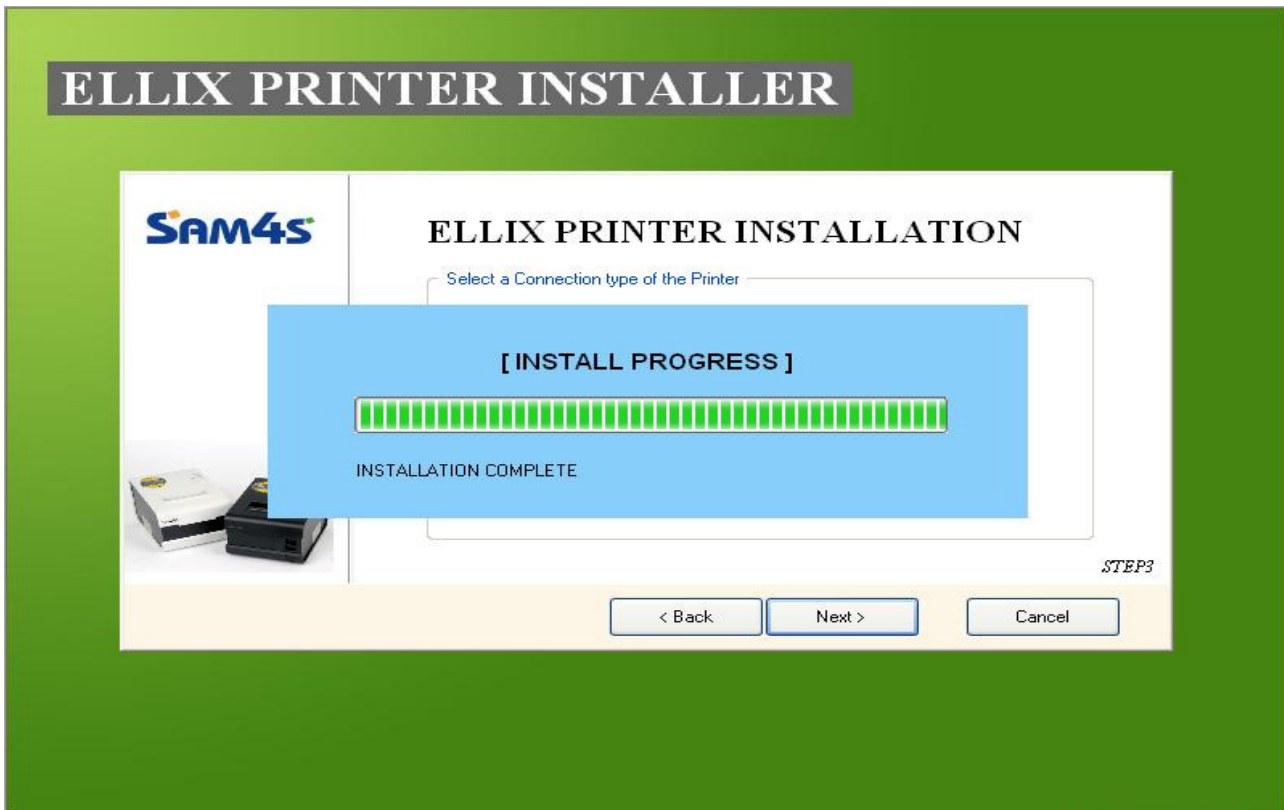
[Pic No.10-2] Start Printer Installation for USB-II connection

ELLIX PRINTER INSTALLER

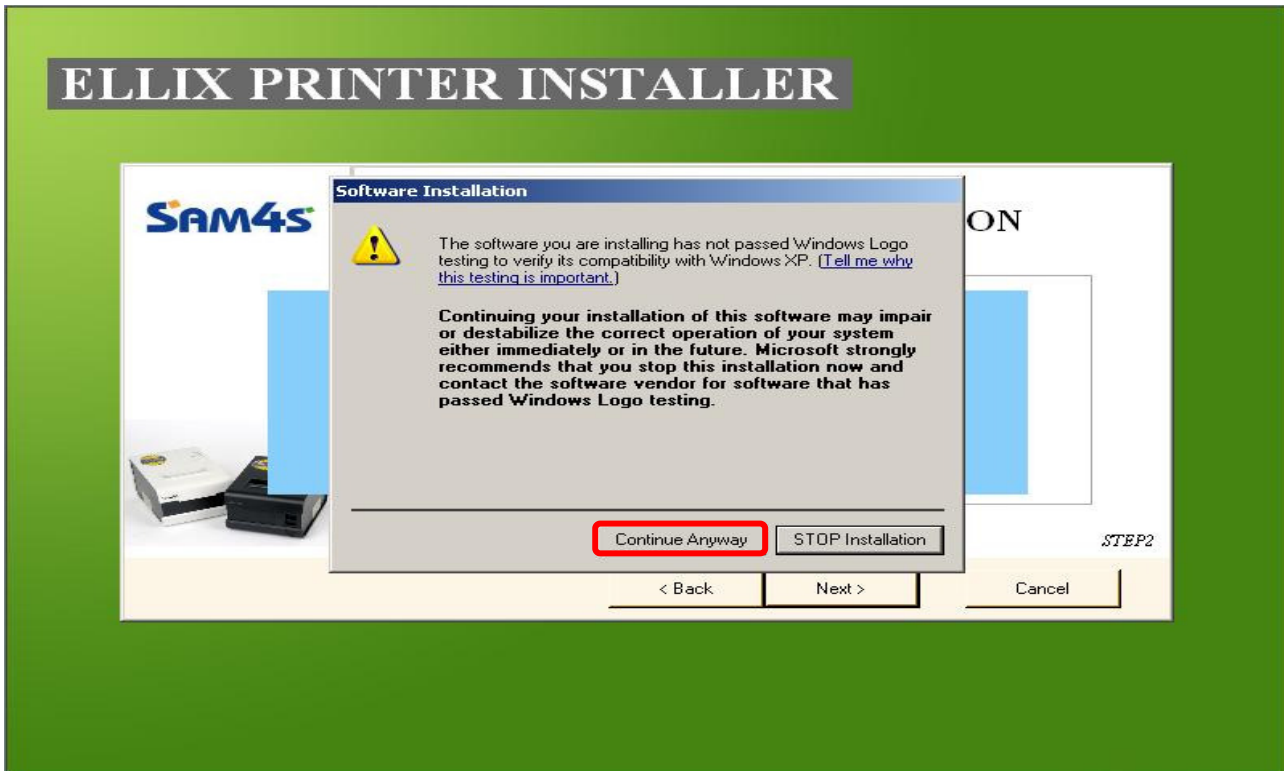


[Pic No.10-3] Start Printer Installation for ETHERNET connection

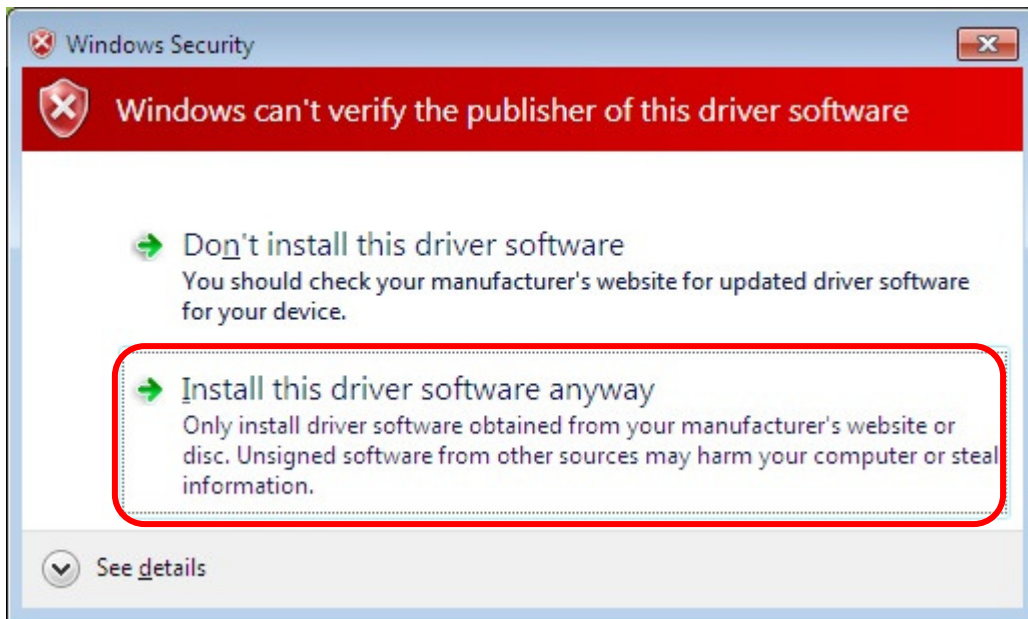
5) Installing Printer



[Pic No.11-1] Installing printer for SERIAL / USB-I / PARALLEL connection



[Pic No.11-2] Installing printer for USB-II connection (Windows XP or below)



[Pic No.11-3] Installing printer for USB-II connection (Windows Vista or above)

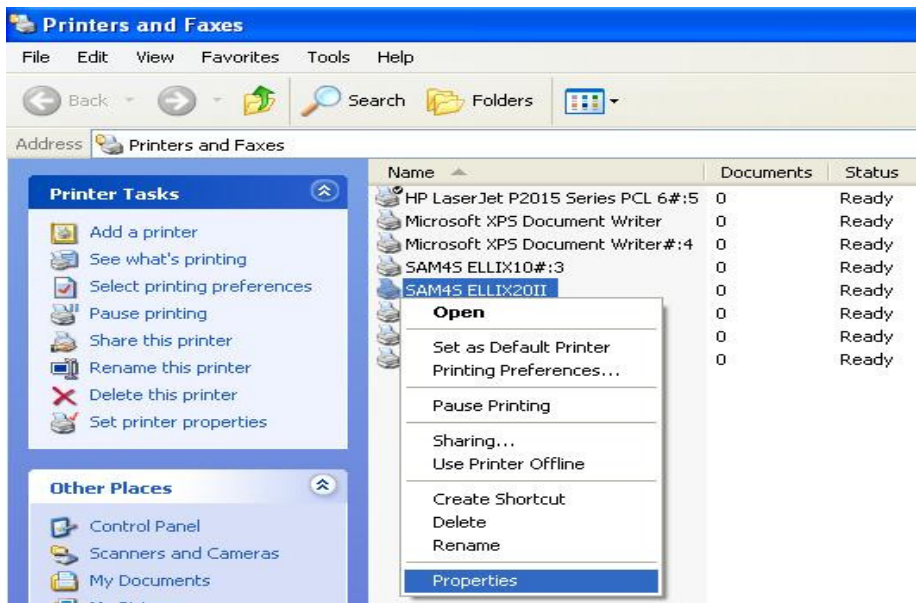
6) Installation Complete



[Pic No.12] Installation Complete

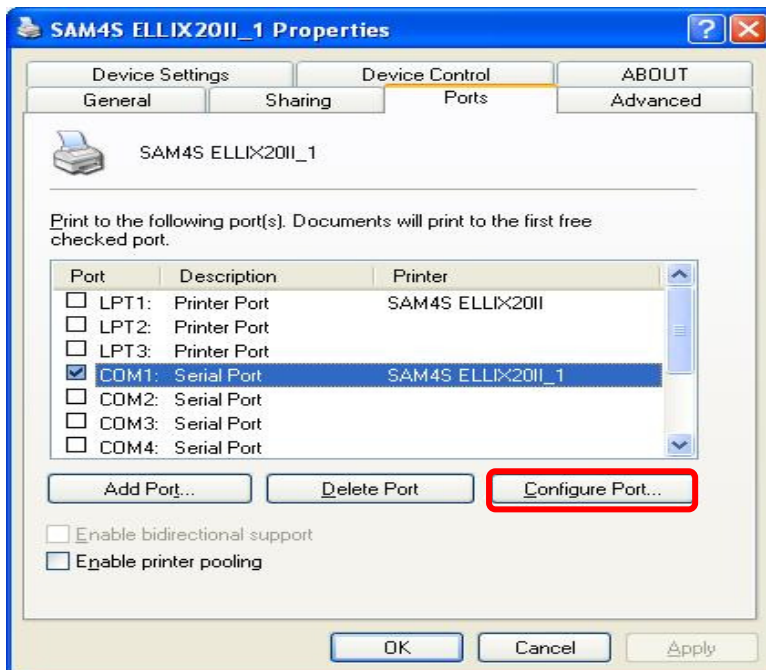
7) Additional work for the printer to use

(1) SERIAL Connection Type



[Pic No. 13] Printer Properties

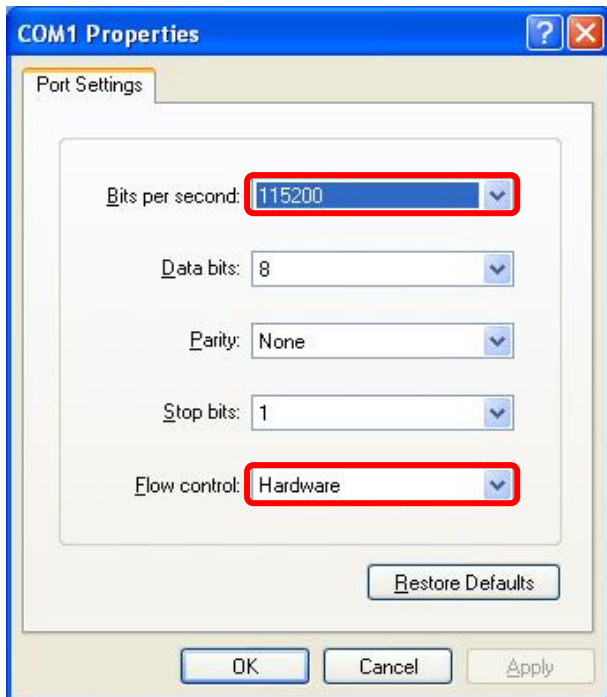
* Select installed printer and right click to enter the 'Properties'.



[Pic No.14] Configure Port

확인 확인

* Select 'Port' tab and Click the 'Configure port...' to set properties.



[Pic No.15] Set Properties for the Port

- * Set Properties same as above.
- * After setting, print the test page to verify that the installation process correctly

(2) PARALLEL Connection Type

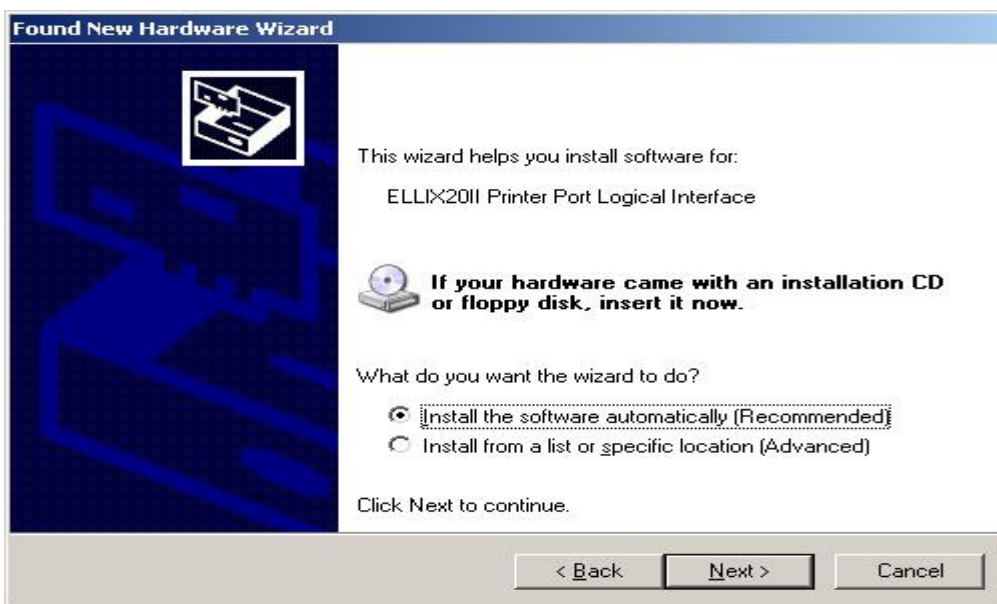
- * Turn on the PARALLEL Printer after finishing Printer Installation.
- * This step will appear only first time.



[Pic No.16] Plug & Play Found New Hardware



[Pic No.17] Hardware Wizard for the Parallel (STEP1)



[Pic No.18] Hardware Wizard for the Parallel (STEP2)



[Pic No.19] Hardware Wizard for the Parallel (STEP3)

(3) USB-II Connection Type

* Turn on the USB-II Printer after finishing Printer Installation.

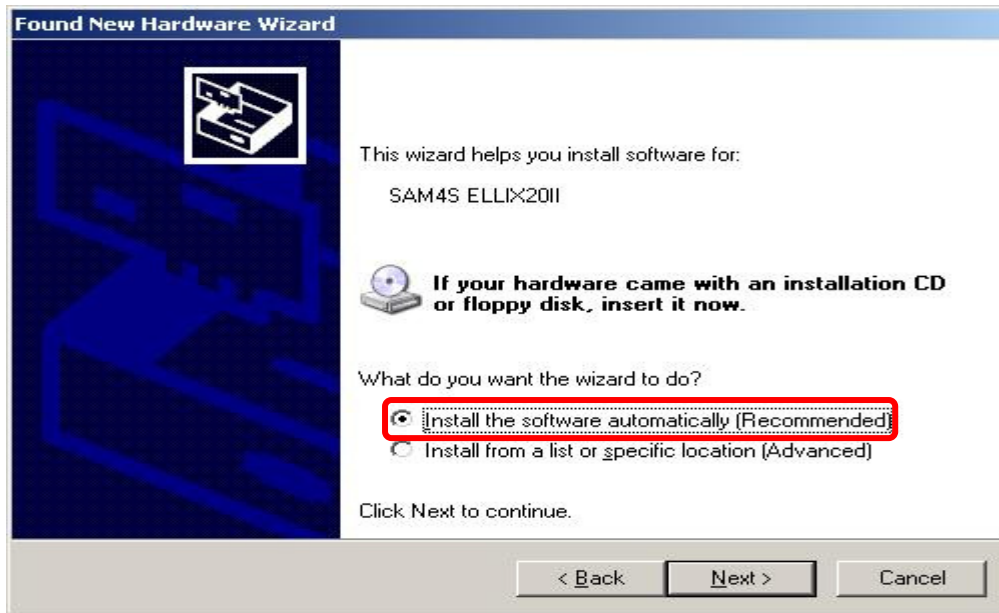
I. Windows XP or Below



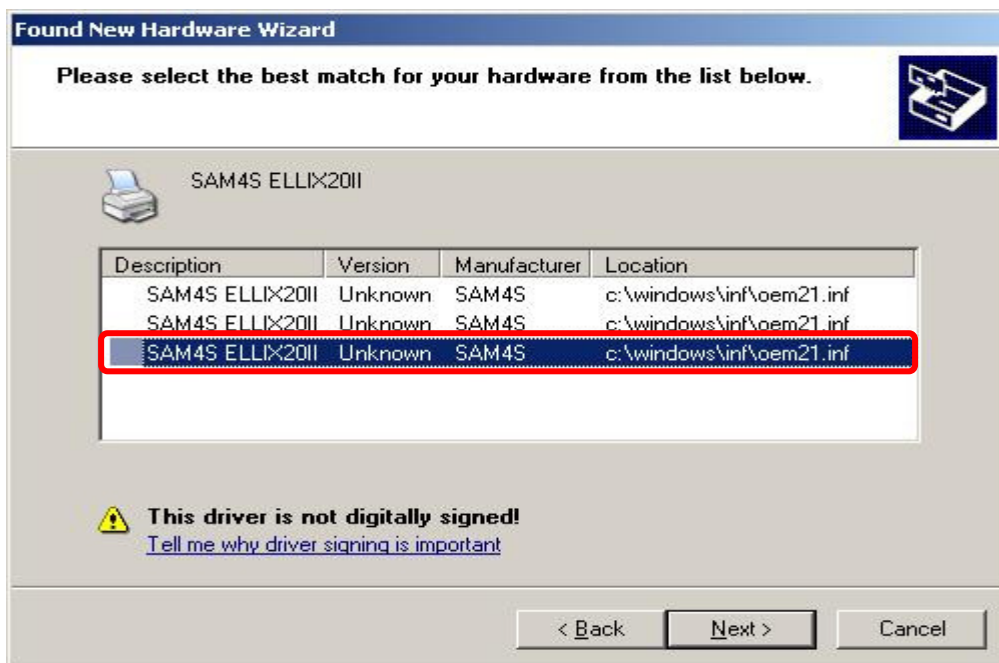
[Pic No.20] Plug & Play Found New Hardware



[Pic No.21] Hardware Wizard for the USB-II (STEP1)



[Pic No.22] Hardware Wizard for the USB-II (STEP2)



[Pic No.23] Hardware Wizard for the USB-II (STEP3)

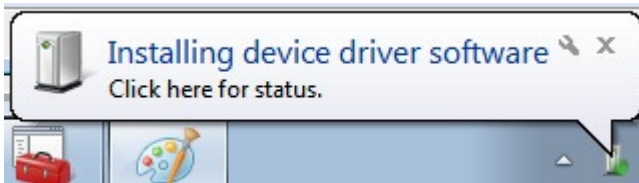


[Pic No.24] Hardware Wizard for the USB-II (STEP4)



[Pic No.25] Hardware Wizard for the USB-II (STEP5)

II. Windows Vista or Above

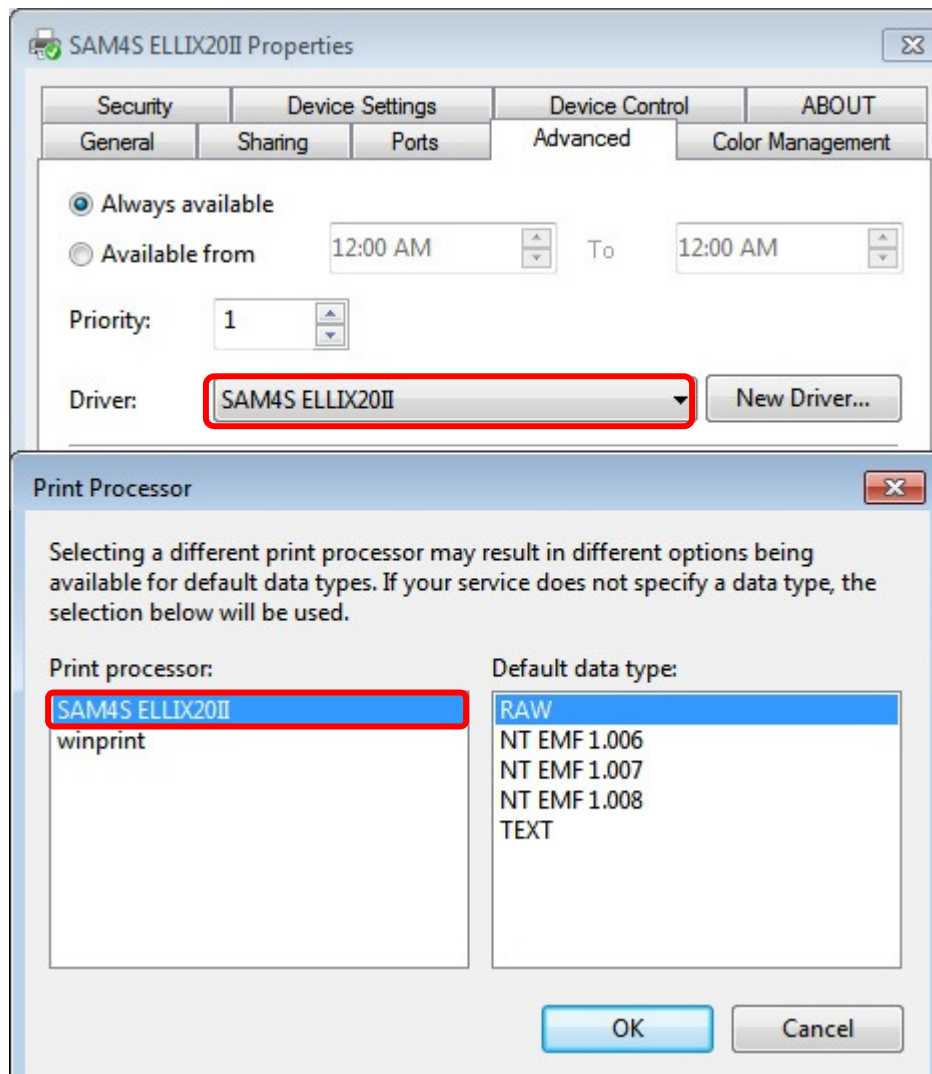


[Pic No.26] Plug & Play Found New Hardware



[Pic No.27] Installing printer automatically

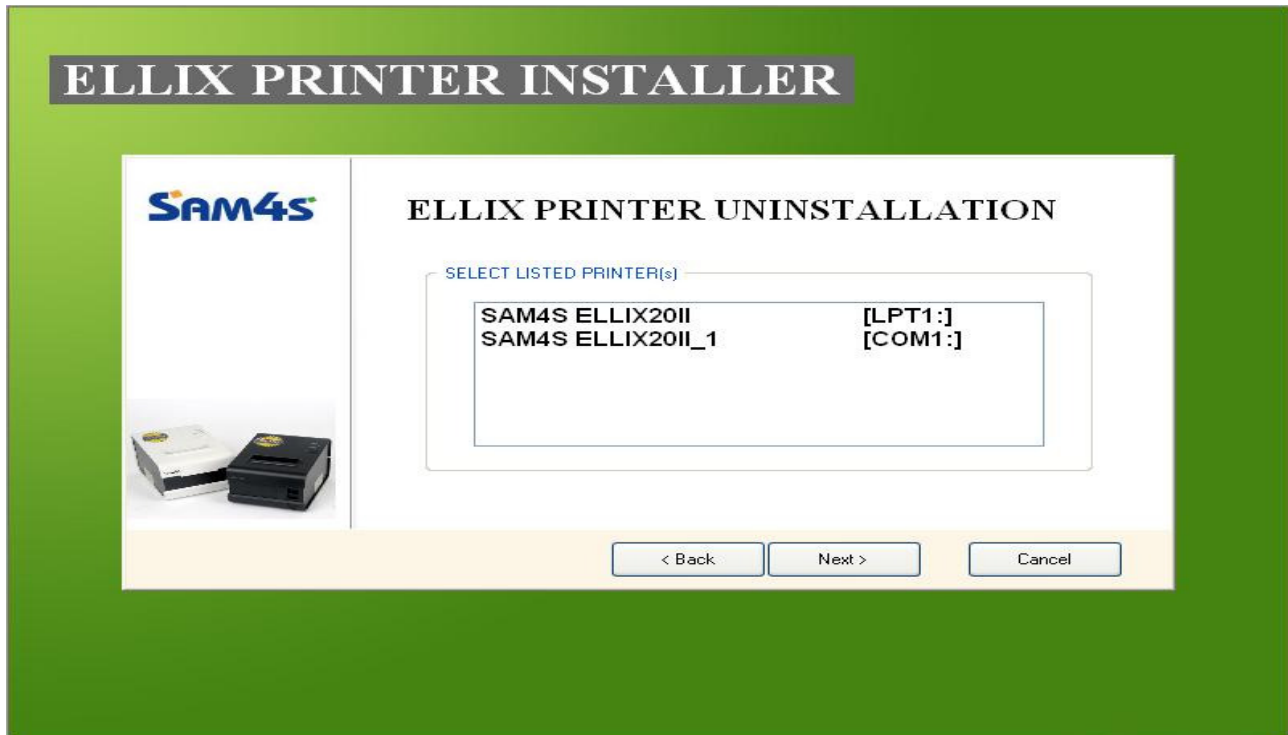
8) Verifying Properties of Installed Printer



[Pic No.28] Advanced Properties

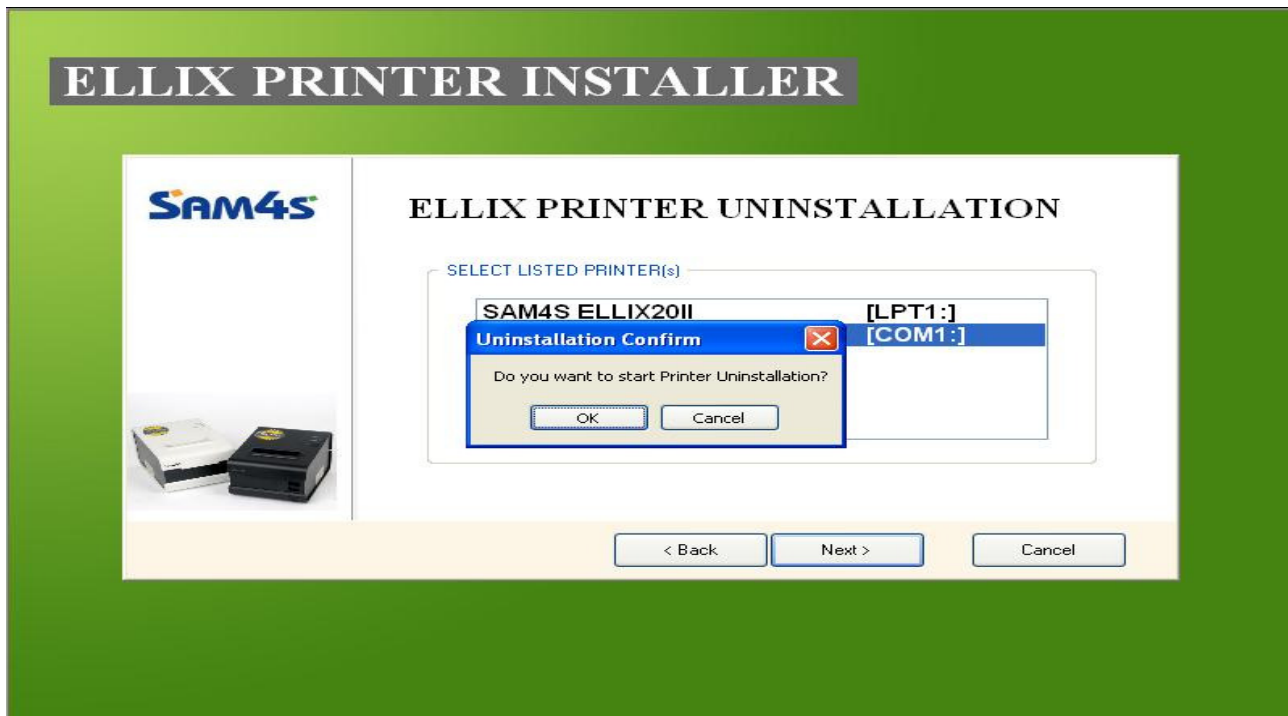
3. Printer Uninstallation

1) Select a Printer



[Pic No.29] List of Installed Printer

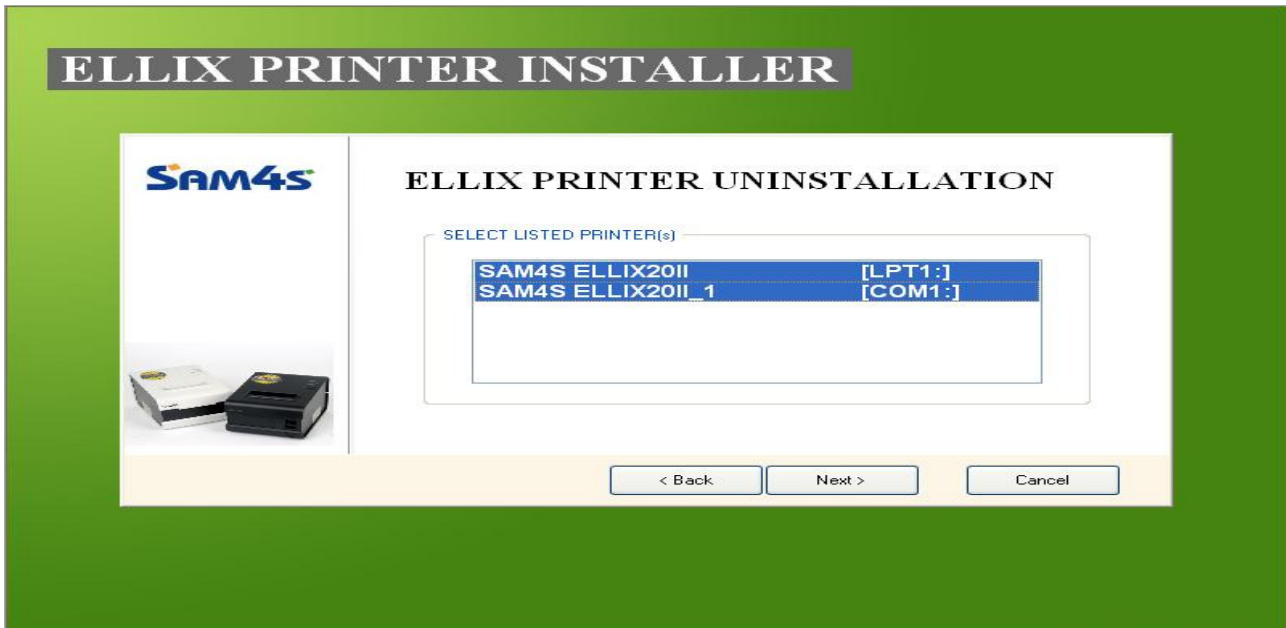
2) Start Printer Uninstallation



[Pic No.30] Start Printer Uninstallation

* Select a printer and click 'Next >'.

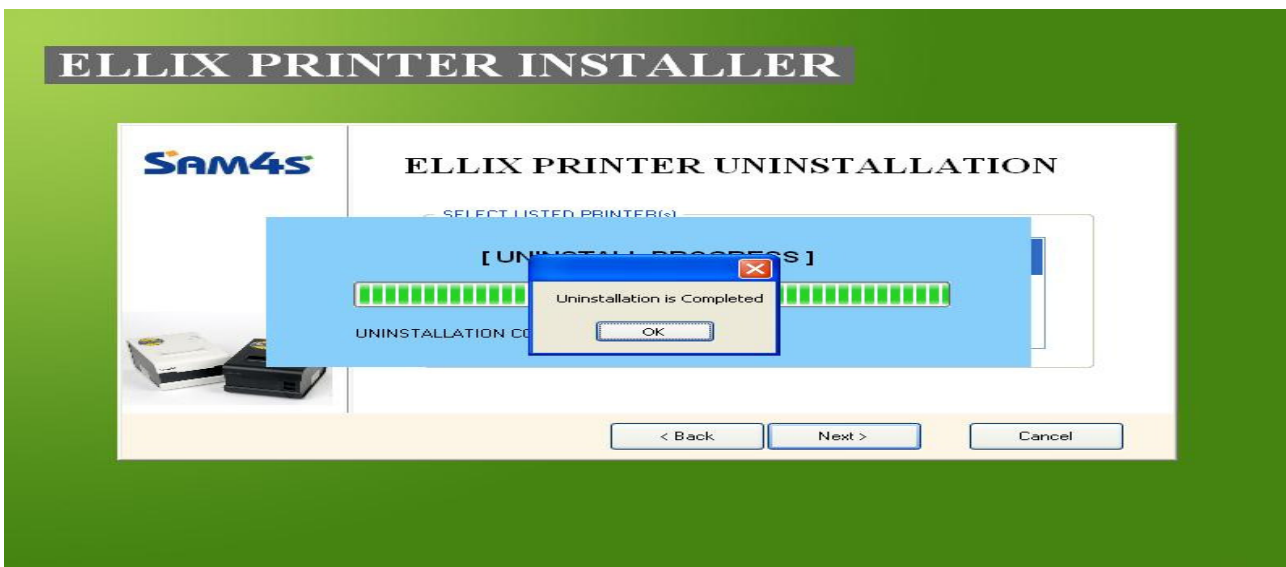
3) Uninstall Printer(s)



[Pic No.31] Uninstall Printer(s)

- * Printer can be selected by dragging mouse or clicking with Ctrl or clicking with Shift.
- * Select one or more printer(s) to remove.

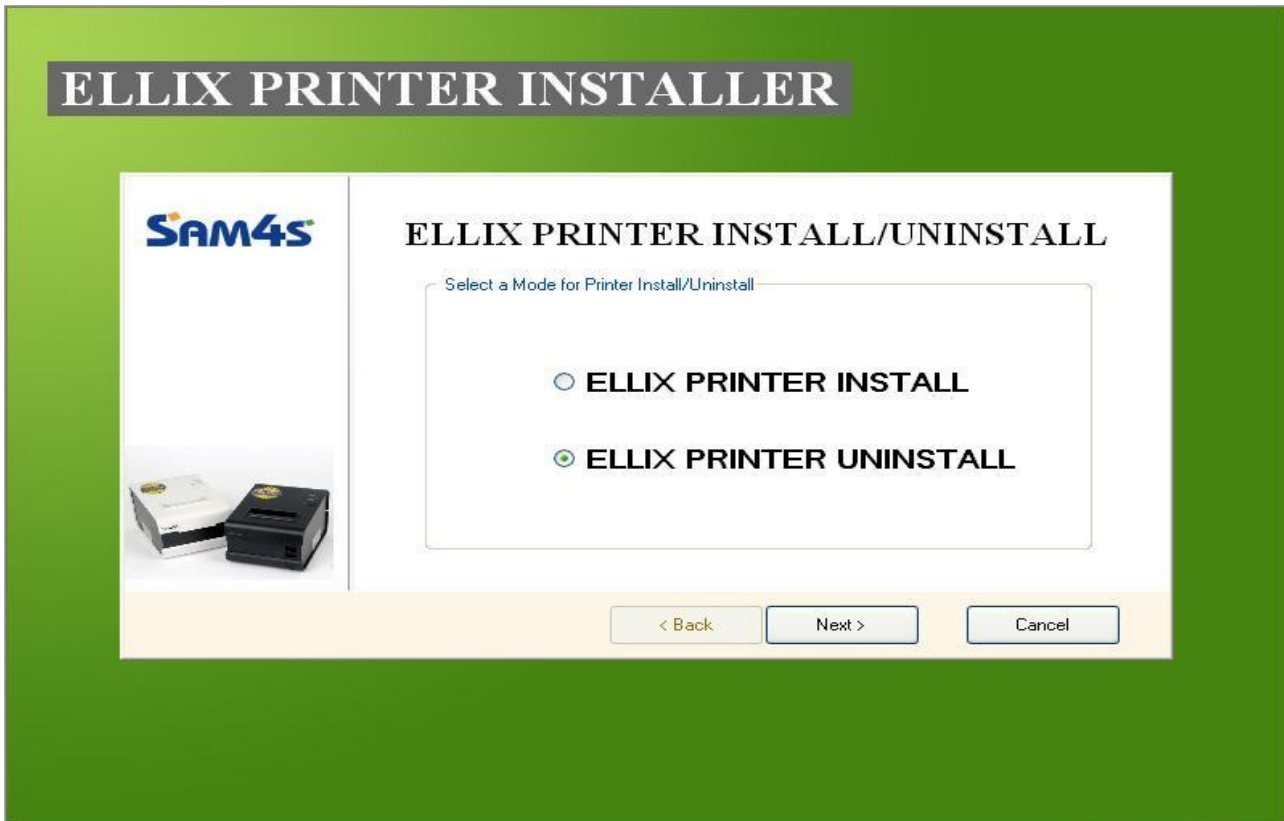
4) Uninstallation Complete



[Pic No.32] Uninstallation Complete

- * When proceeding uninstall printer, state of printer should be 'Ready'.
- * If the printer is in use or wait, even if uninstallation is successfully completed, printer may not be removed.
- * After uninstalling the printer, you can be sure that the device was removed from the list of printer.

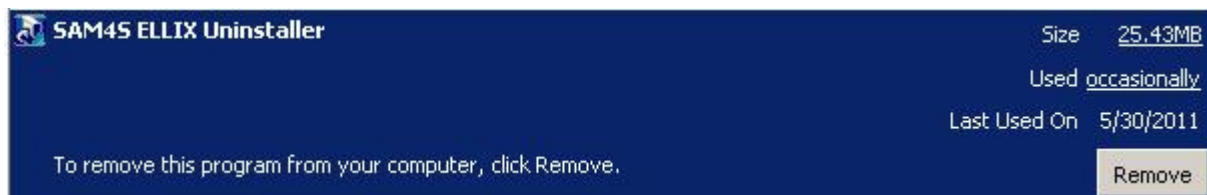
4. Install / Uninstall Selection Mode



[Pic No.33] Install/Uninstall Selection Mode

- * If there is an installed printer, printer installation / Uninstallation can make a choice.
- * 'Printer Uninstall' is selected as the default setting.

5. Add or Remove Program



[Pic No.34] Add or Remove Programs

- * When a printer installed, the Uninstaller will be added on list of the 'Add or Remove Programs'
- * After uninstalling all of the printer(s), 'Add / Remove Programs' list automatically eliminated.